

Table 2: MCC. A table with 3 columns: Input, Output, and Time to fully charge. It lists specifications for the USB Type C DC 5V 2A input and the C&C&V 4.2V 2.0A output, with a charging time of approximately 5.5 hours.

Table 1: SPECIFICATIONS. A table listing technical details such as beam distance (2500m), beam diameter (2.5mm), lens diameter (162mm), and various modes (Turbo, High, Medium, Low, Moonlight) with their respective runtimes.

WARRIOR ULTRA

TAIL SWITCH OPERATION: Figure 9 Configuration Switching

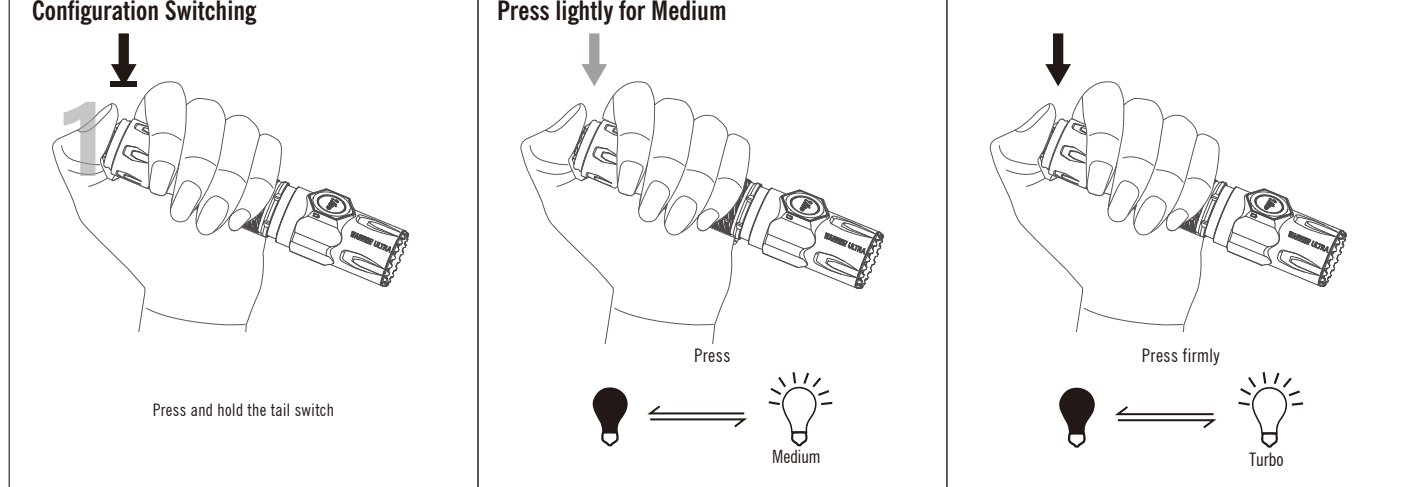


Figure 11 Press lightly and hold for momentary on (Medium)

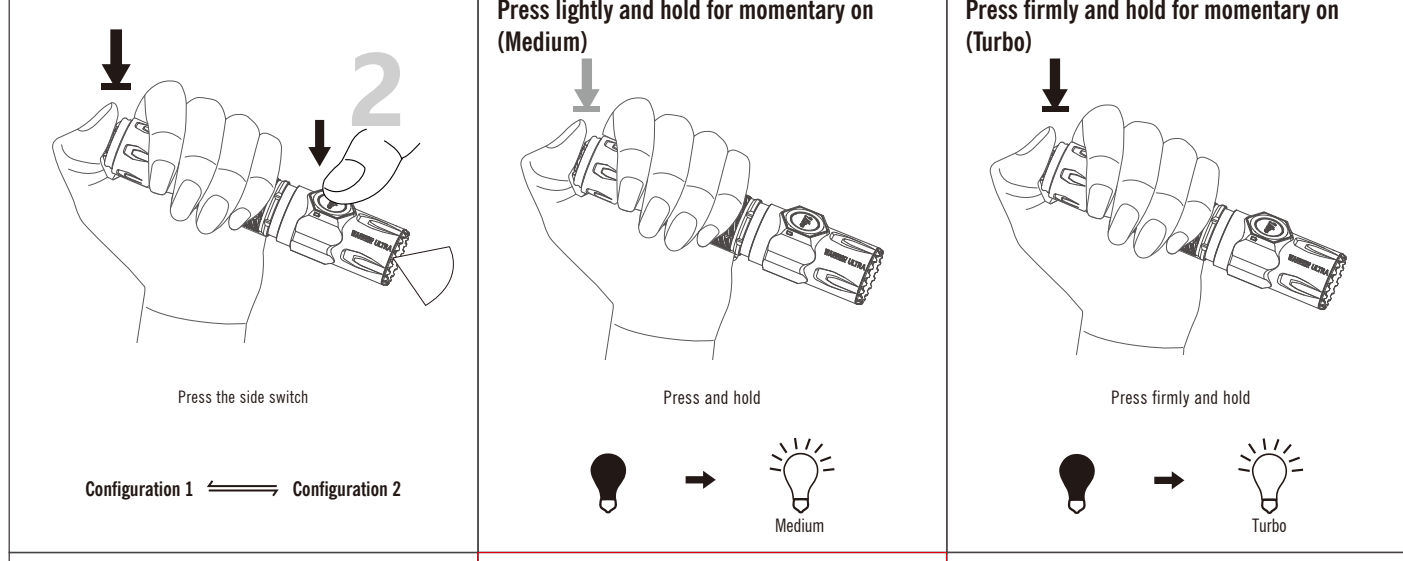


Figure 13 Press firmly and hold for momentary on (Turbo)

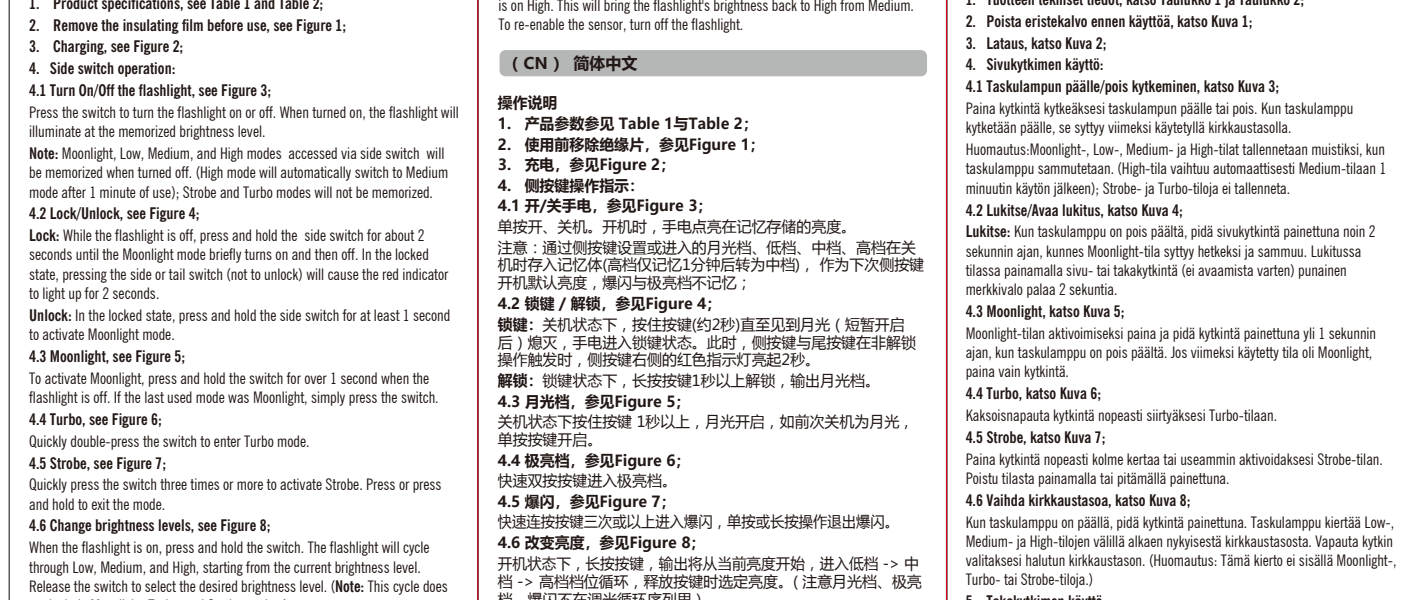
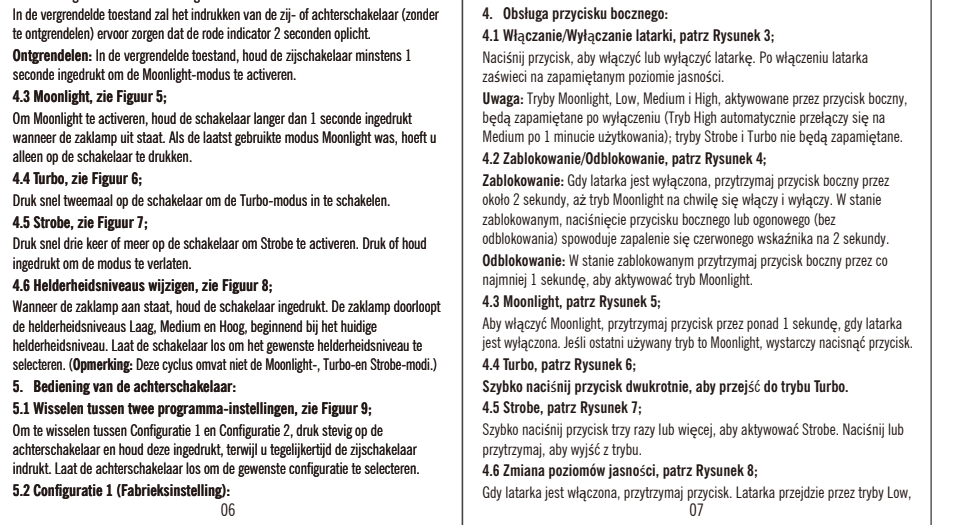
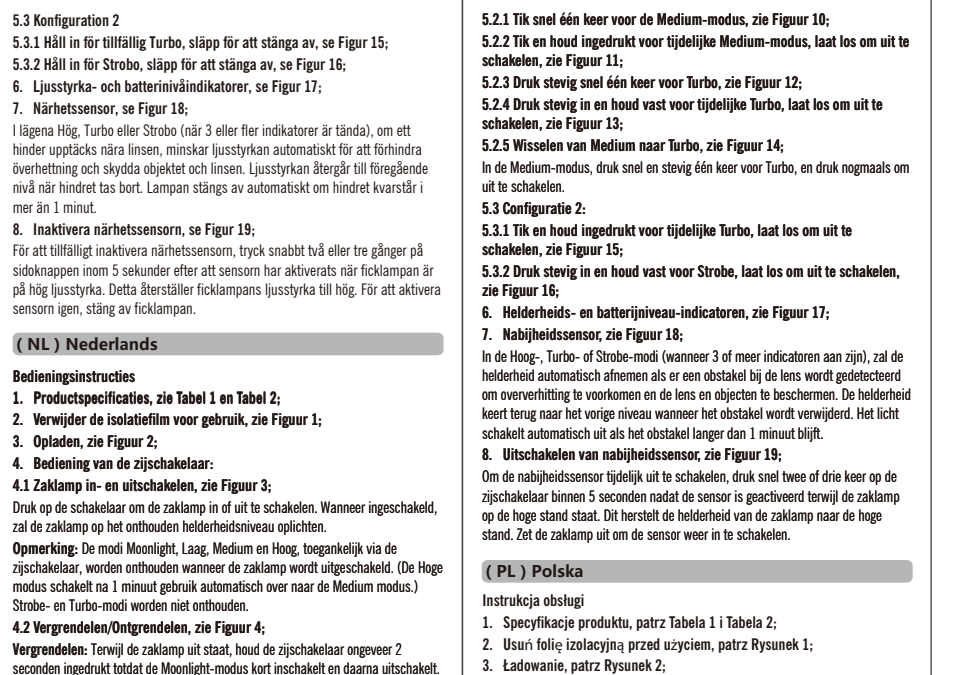
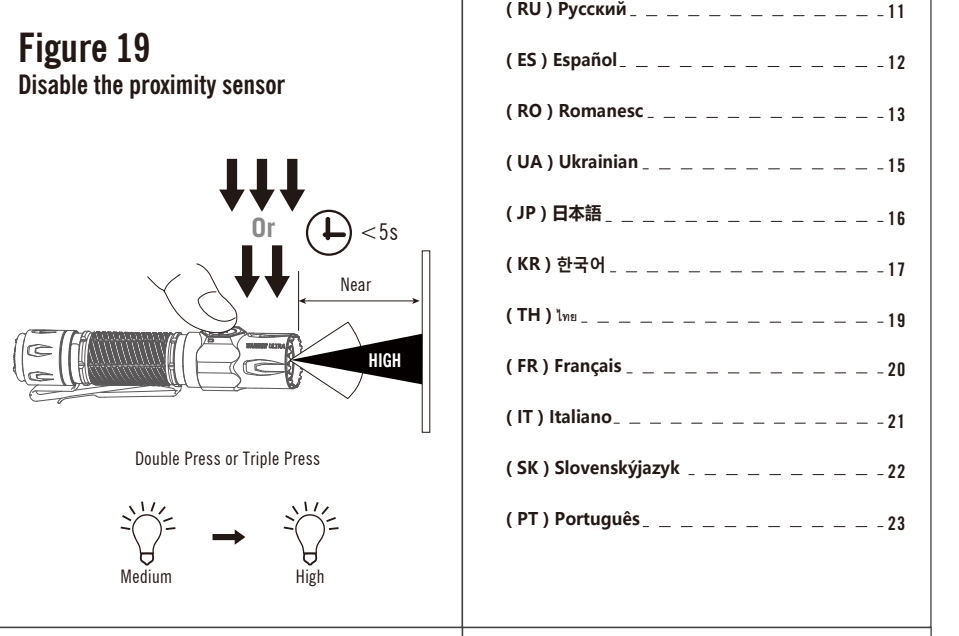
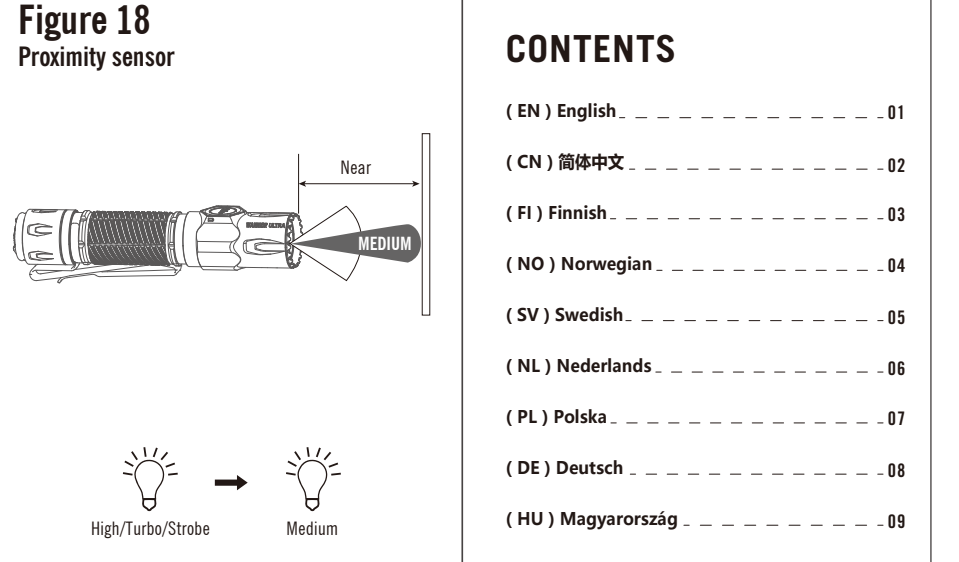
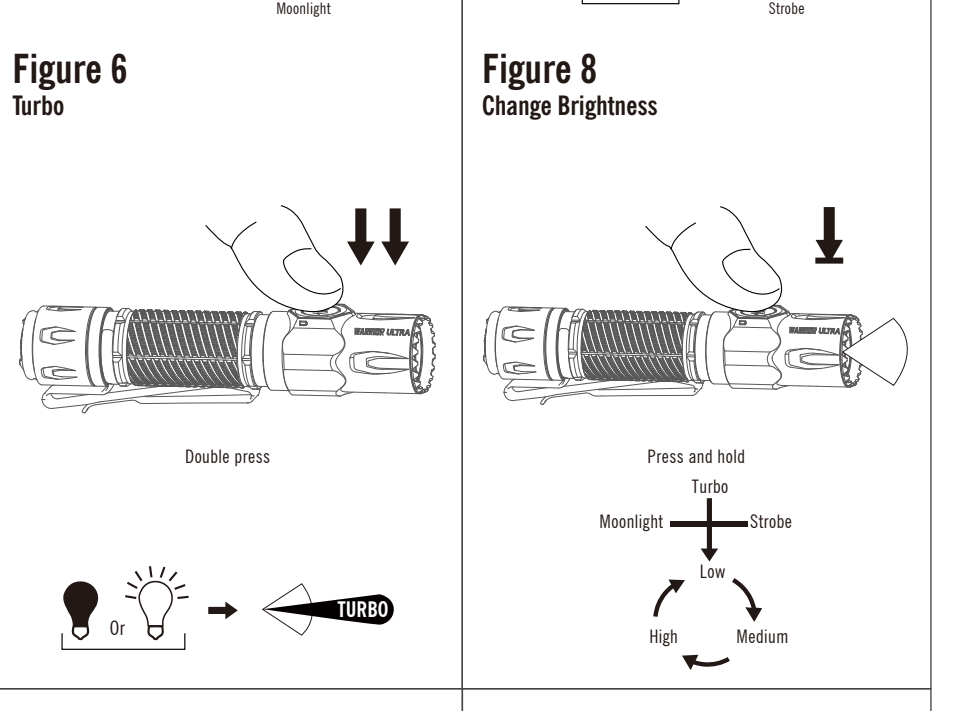
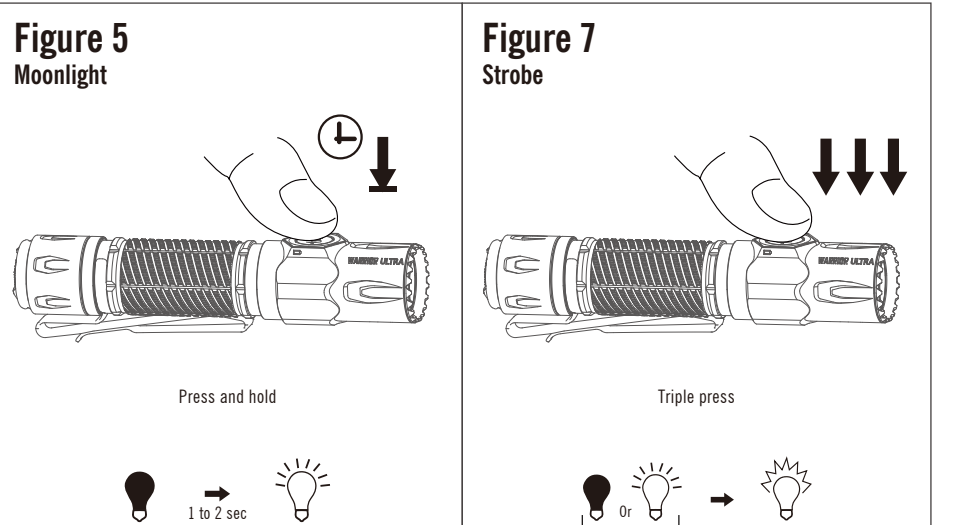
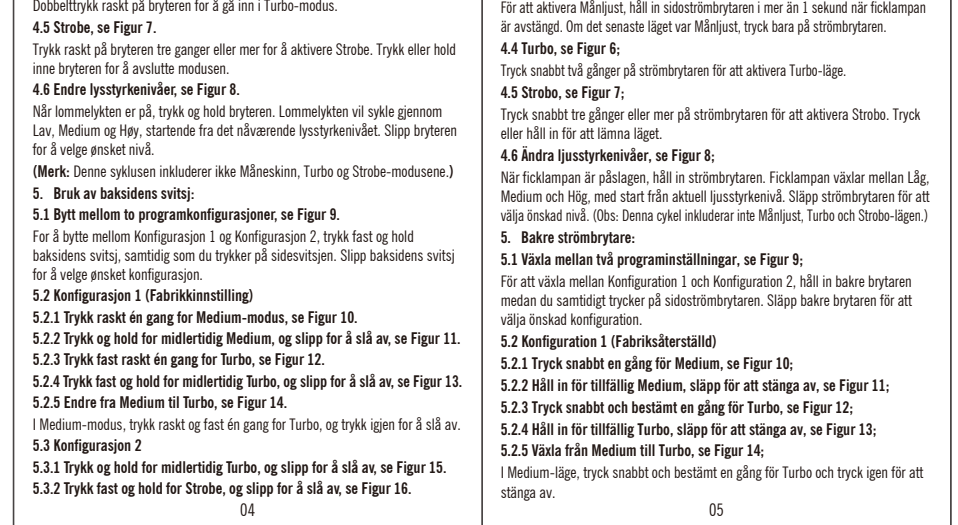
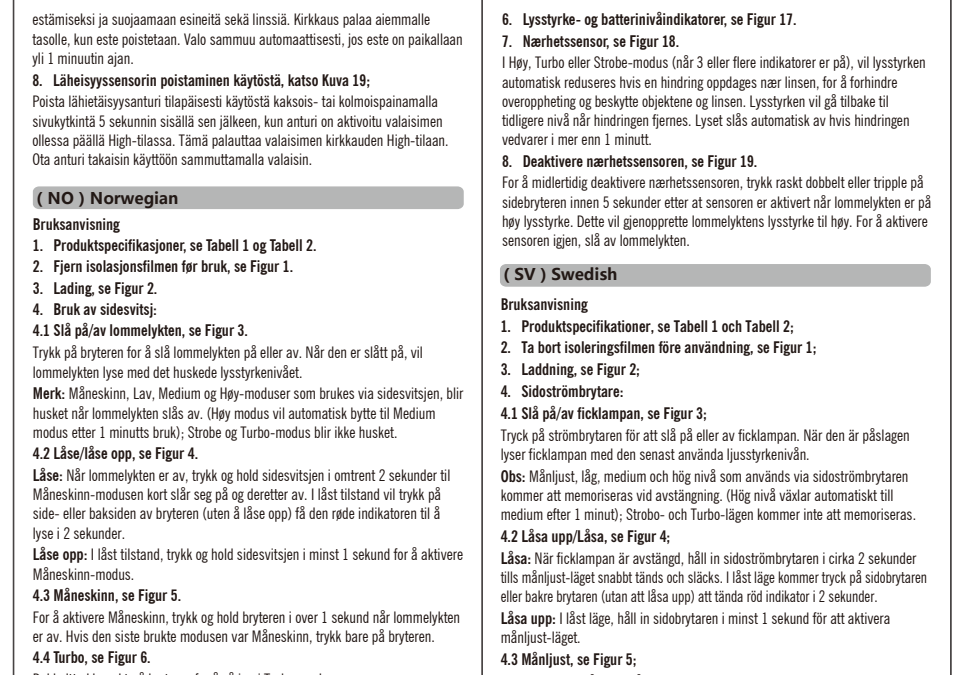
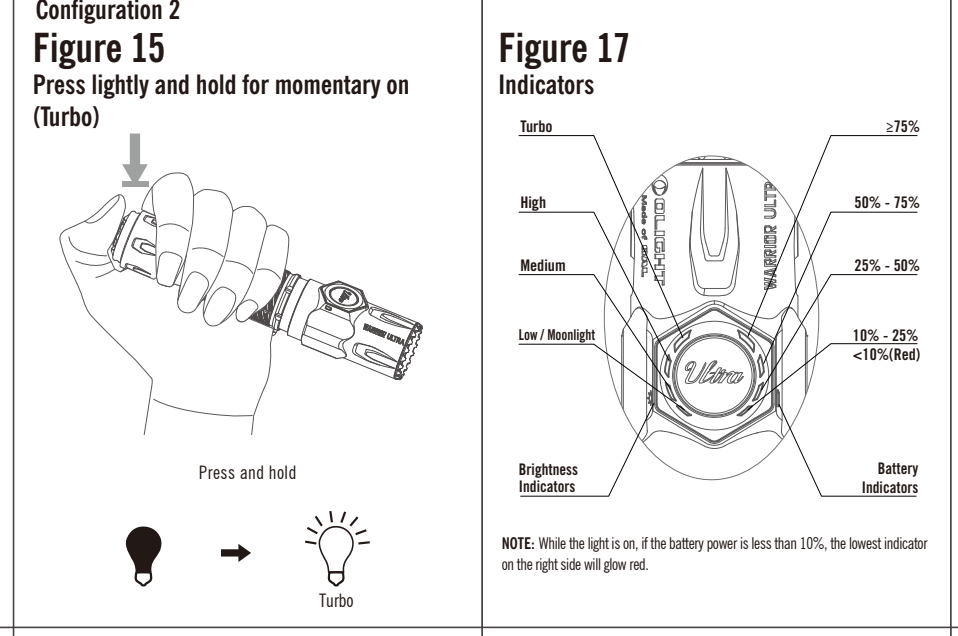
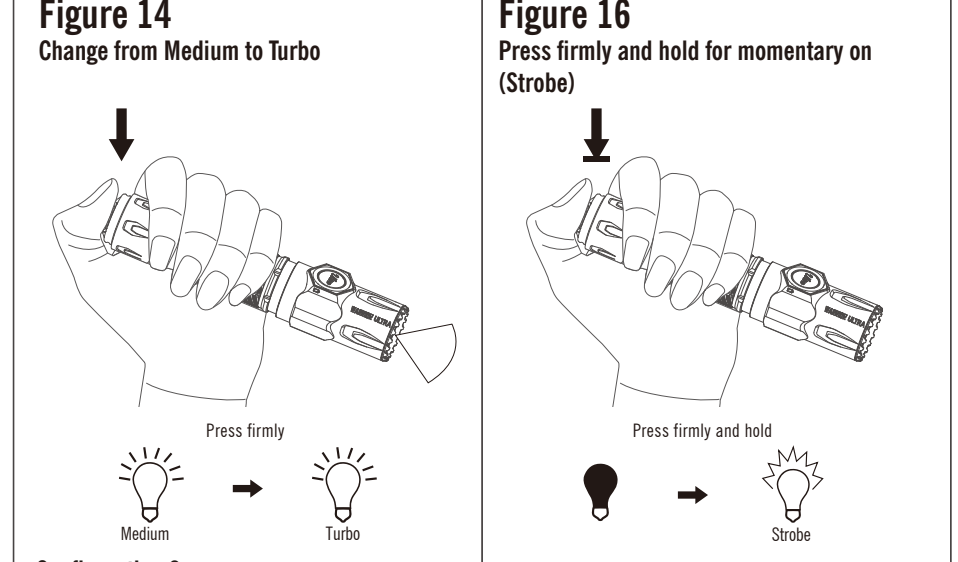
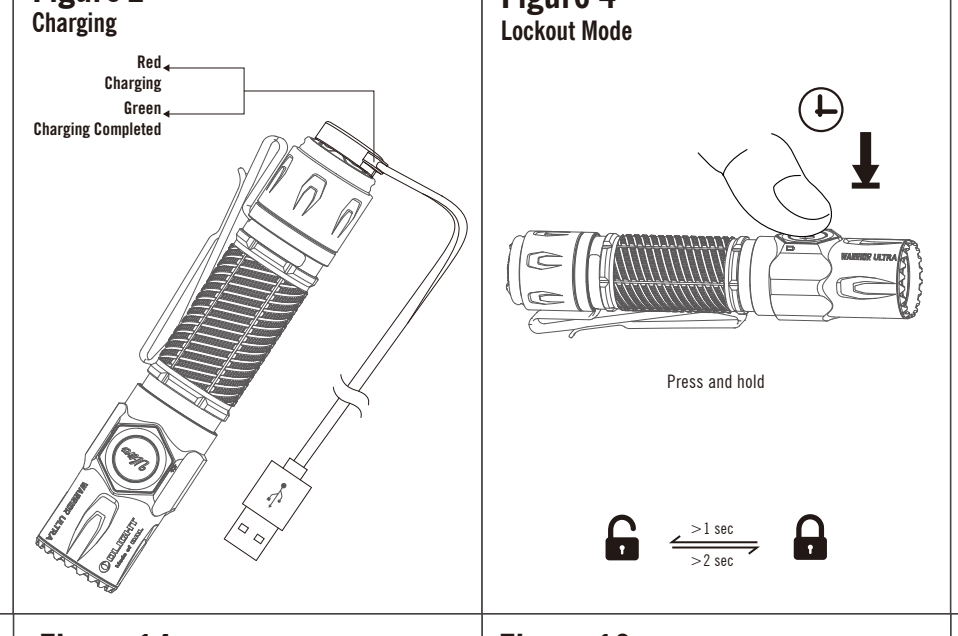
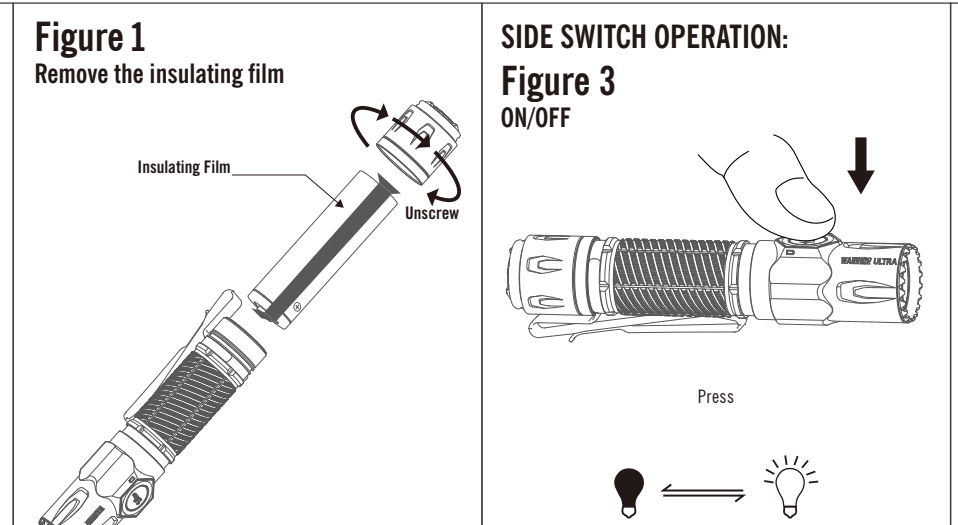
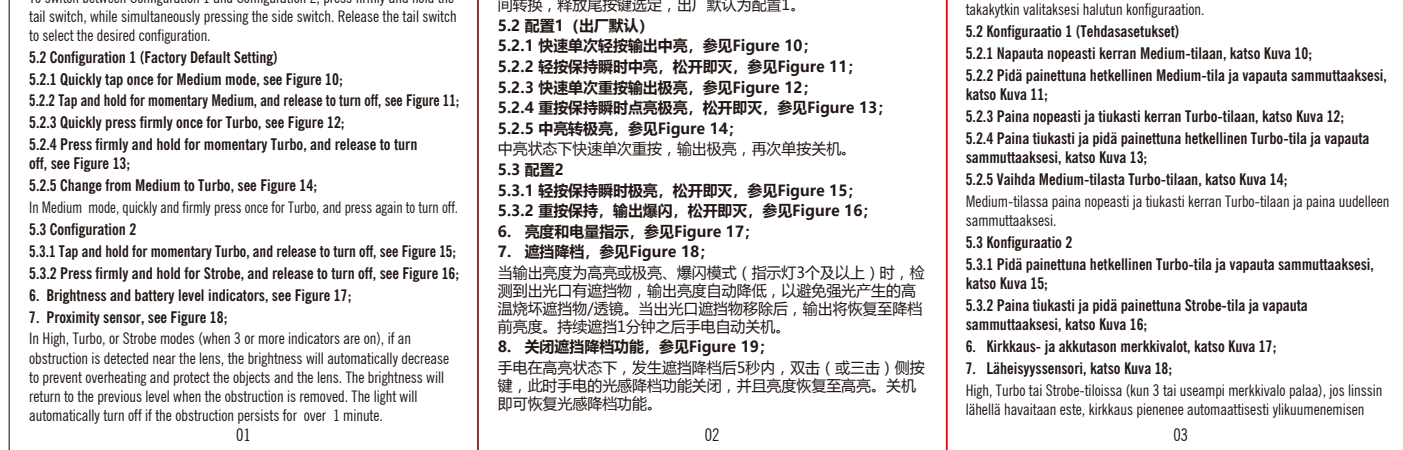


Figure 15 Press lightly and hold for momentary on (Turbo)



Medium High automatic brightness program, which will automatically adjust the beam (beam). It means no longer need Turbo mode. Turbo mode is available only when the flashlight is in Turbo mode. Turbo mode is available only when the flashlight is in Turbo mode.

1. Turn on the flashlight. Press and hold the tail switch for 2 seconds. The flashlight will enter the Turbo mode. Press and hold the tail switch for 2 seconds. The flashlight will enter the Turbo mode.

1. Turn on the flashlight. Press and hold the tail switch for 2 seconds. The flashlight will enter the Turbo mode. Press and hold the tail switch for 2 seconds. The flashlight will enter the Turbo mode.

1. Turn on the flashlight. Press and hold the tail switch for 2 seconds. The flashlight will enter the Turbo mode. Press and hold the tail switch for 2 seconds. The flashlight will enter the Turbo mode.

1. Turn on the flashlight. Press and hold the tail switch for 2 seconds. The flashlight will enter the Turbo mode. Press and hold the tail switch for 2 seconds. The flashlight will enter the Turbo mode.

1. Turn on the flashlight. Press and hold the tail switch for 2 seconds. The flashlight will enter the Turbo mode. Press and hold the tail switch for 2 seconds. The flashlight will enter the Turbo mode.

1. Turn on the flashlight. Press and hold the tail switch for 2 seconds. The flashlight will enter the Turbo mode. Press and hold the tail switch for 2 seconds. The flashlight will enter the Turbo mode.

1. Turn on the flashlight. Press and hold the tail switch for 2 seconds. The flashlight will enter the Turbo mode. Press and hold the tail switch for 2 seconds. The flashlight will enter the Turbo mode.

1. Turn on the flashlight. Press and hold the tail switch for 2 seconds. The flashlight will enter the Turbo mode. Press and hold the tail switch for 2 seconds. The flashlight will enter the Turbo mode.

1. Turn on the flashlight. Press and hold the tail switch for 2 seconds. The flashlight will enter the Turbo mode. Press and hold the tail switch for 2 seconds. The flashlight will enter the Turbo mode.

1. Turn on the flashlight. Press and hold the tail switch for 2 seconds. The flashlight will enter the Turbo mode. Press and hold the tail switch for 2 seconds. The flashlight will enter the Turbo mode.

1. Turn on the flashlight. Press and hold the tail switch for 2 seconds. The flashlight will enter the Turbo mode. Press and hold the tail switch for 2 seconds. The flashlight will enter the Turbo mode.

1. Turn on the flashlight. Press and hold the tail switch for 2 seconds. The flashlight will enter the Turbo mode. Press and hold the tail switch for 2 seconds. The flashlight will enter the Turbo mode.

1. Turn on the flashlight. Press and hold the tail switch for 2 seconds. The flashlight will enter the Turbo mode. Press and hold the tail switch for 2 seconds. The flashlight will enter the Turbo mode.

1. Turn on the flashlight. Press and hold the tail switch for 2 seconds. The flashlight will enter the Turbo mode. Press and hold the tail switch for 2 seconds. The flashlight will enter the Turbo mode.

1. Turn on the flashlight. Press and hold the tail switch for 2 seconds. The flashlight will enter the Turbo mode. Press and hold the tail switch for 2 seconds. The flashlight will enter the Turbo mode.

1. Turn on the flashlight. Press and hold the tail switch for 2 seconds. The flashlight will enter the Turbo mode. Press and hold the tail switch for 2 seconds. The flashlight will enter the Turbo mode.

1. Turn on the flashlight. Press and hold the tail switch for 2 seconds. The flashlight will enter the Turbo mode. Press and hold the tail switch for 2 seconds. The flashlight will enter the Turbo mode.

1. Turn on the flashlight. Press and hold the tail switch for 2 seconds. The flashlight will enter the Turbo mode. Press and hold the tail switch for 2 seconds. The flashlight will enter the Turbo mode.

1. Turn on the flashlight. Press and hold the tail switch for 2 seconds. The flashlight will enter the Turbo mode. Press and hold the tail switch for 2 seconds. The flashlight will enter the Turbo mode.

1. Turn on the flashlight. Press and hold the tail switch for 2 seconds. The flashlight will enter the Turbo mode. Press and hold the tail switch for 2 seconds. The flashlight will enter the Turbo mode.

1. Turn on the flashlight. Press and hold the tail switch for 2 seconds. The flashlight will enter the Turbo mode. Press and hold the tail switch for 2 seconds. The flashlight will enter the Turbo mode.

1. Turn on the flashlight. Press and hold the tail switch for 2 seconds. The flashlight will enter the Turbo mode. Press and hold the tail switch for 2 seconds. The flashlight will enter the Turbo mode.

1. Turn on the flashlight. Press and hold the tail switch for 2 seconds. The flashlight will enter the Turbo mode. Press and hold the tail switch for 2 seconds. The flashlight will enter the Turbo mode.